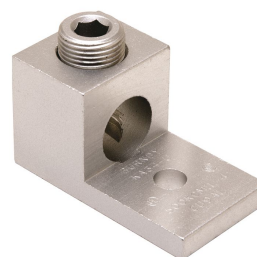




KA30U, AL Universal Terminal, 1-Hole, #6 AWG Str-300 kcmil, 5/16" Stud, 1 Screw, Al/Cu Rated

By Burndy
Catalog # KA30U

Aluminum Universal Terminal, 1 Hole, 6 AWG (Str)-300 kcmil, 5/16" Stud, 1 Screw, Al/Cu Rated, Tin Plated



Features

- Dual Rated Panelboard Lugs
- High strength extruded aluminum alloy
- Electro tin-plated for low contact resistance
- Rated to 35kV

Application

For Aluminum And Copper Conductors

Specifications

EU RoHS Indicator	Yes
Industry Standard(s)	UL 486A-486B
Standards - Industry Standards Met	UL 486A-486B
Standards - RoHS Compliance Status	EX
Certification - UL Listed Direct Burial	No
UL Listed	Yes
Certification - CSA Approved	Yes

Conductor

Conductor - AL Str Size	<ul style="list-style-type: none"> • 6 AWG • 4 AWG • 3 AWG • 2 AWG • 1 AWG • 1/0 AWG • 2/0 AWG • 3/0 AWG • 4/0 AWG • 250 kcmil • 266 kcmil • 300 kcmil
Conductor - AL Str Size Range	6 AWG-300 kcmil
Conductor - Copper Str Size	<ul style="list-style-type: none"> • 6 AWG • 5 AWG • 4 AWG • 3 AWG • 2 AWG • 1 AWG • 1/0 • 2/0 AWG • 3/0 AWG

Conductor Size	<ul style="list-style-type: none"> • 4/0 AWG • 250 kcmil • 300 kcmil
Conductor - Copper Solid Size	<ul style="list-style-type: none"> • 4 AWG • 3 AWG • 2 AWG • 1 AWG • 1/0 AWG • 2/0 AWG • 3/0 AWG • 4/0 AWG
Number Of Conductors	1
Conductor - Copper Solid Size Range	4 AWG-4/0 AWG
Conductor Type	<ul style="list-style-type: none"> • AL C Str-Size • CU C Str-Size • CU C Solid-Size
Conductor - Copper Str Size Range	6 AWG-300 kcmil

Configuration

Physical Attribute - Number of Screws	1
Physical Attribute - Number of Holes	1
Connector Type	Terminal

Dimensions

Dimension - Pad Width inch	1.02 in
Package Height	2.300 in
Dimension - Height mm	29 mm
Dimension - Height inch	1.14 in
Dimension - Height fraction	1.14 in
Package Weight	2.800 lb.
Package Length	10.100 in
Package Width	3.550 in
Dimension - L Length Overall mm	51 mm
Dimension - Hole Size mm	8 mm
Dimension - Hole Size inch	0.33 in
Dimension - Stud Size inch	5/16
Dimension - Bolt Hole Size inch	0.31 in
Dimension - Bolt Size fraction	5/16
Dimension - Width mm	25 mm

Dimension - Width inch 1.00 in
Dimension - D inch 0.94 in
Dimension - N inch 0.45 in
Dimension - Length Overall inch 2.00 in

Force Related

Installation Torque 275 LBS/in
Recommended in-lb

General

Material - Hardware Aluminum
Physical Attribute - Screw Type Allen
Plated Y
Sub-Brand UNIVERSAL TERM

UPC 781810370223
Type Bolted Lugs & Terminals
Material Aluminum
Plating Type Tin
UPC 14 Digit GTIN 00781810370223

Logistics

Pallet Quantity 8800
Carton Quantity 275

Operational

Temperature Rating 194

Product Assets

[Catalog \[English\]](#)



A Hubbell brand