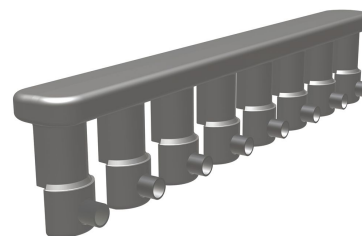


## RDM828, Aluminum - Multiple Outlet Connector (RDM Mole)

By Burndy  
Catalog # [RDM828](#)



URD MOLE - 8 Outlets, Molded Rubber Insulation, 11.75" L,  
Insulation: 600 V Rating

### Features

- Type RDM-28 MOLE connectors are an economical, insulated, submersible service junction suitable for direct burial or for use in enclosures
- Disconnectable Joints allow additions of new services without disturbing previous installations
- Taping is eliminated, Heat Shrink or Force-Fit Rubber Sleeves insulated each joint, Rubber is used to insulate the MOLE body
- Removable sealing covers are supplied on all outlets but two
- REA Listed Tap Kits, including HYLUG, Hardware and Sleeve are ordered separately

### Specifications

Certification - cULus	No
Certification - UL Recognized	No
Certification - ETL	No
Standards - RoHS Compliance Status	CM
Certification - CSA Approved	No
UL Listed	No

### Conductor

Conductor - Copper Str Size	<ul style="list-style-type: none"> <li>• 4 AWG</li> <li>• 3 AWG</li> <li>• 2 AWG</li> <li>• 1 AWG</li> <li>• 1/0</li> <li>• 2/0 AWG</li> <li>• 3/0 AWG</li> <li>• 4/0 AWG</li> <li>• 250 kcmil</li> </ul>
Conductor - Copper Str Size Range	4 AWG-250 kcmil
Conductor - AL Str Size	<ul style="list-style-type: none"> <li>• 4 AWG</li> <li>• 3 AWG</li> <li>• 2 AWG</li> <li>• 1 AWG</li> <li>• 1/0 AWG</li> </ul>

- 2/0 AWG
- 3/0 AWG
- 4/0 AWG
- 250 kcmil
- 266 kcmil
- 300 kcmil
- 336 kcmil
- 350 kcmil

Conductor - AL Str Size Range 4 AWG-350 kcmil

### Configuration

Number Of Outlets	8
Connector Type	Mole

### Dimensions

Package Length	0.000 in
Package Width	0.000 in
Package Weight	0.000 lb.
Package Height	0.000 in
Dimension - Length Overall	11.75 in
inch	

### General

Insulation Type	Rubber
Trade Name	MOLE™
Insulation	Y
UPC 12 Digit	781810180105
UPC 14 Digit GTIN	00781810180105
Material	Aluminum Alloy
UPC	781810180105

### Logistics

Minimum Pack Quantity	1
Carton Quantity	12
Pallet Quantity	1

### Product Assets

[Catalog \[English\]](#)