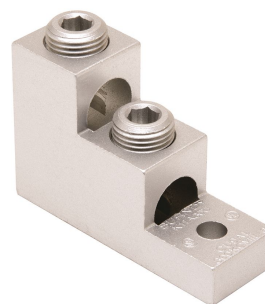


K11A30U, AL Universal Terminal, 2-Conductor, 1-Hole

By Burndy
Catalog # [K11A30U](#)

2 Conductors: 6 AWG-300 kcmil, 1 Hole, 5/16" Stud, 2 Screws, AL/CU, Tin Plated



Features

- Dual rated panelboard lugs
- Constructed from high strength, extruded aluminum alloy
- Electro tin-plated to provide low contact resistance

Application

For Aluminum And Copper Conductors

Specifications

Buy American Compliant	Contact Manufacturer
EU RoHS Indicator	Yes
Buy America(n) Qualified	BABA Compliant (All status valid till December 2026)
Industry Standard(s)	UL 486A-486B
Standards - Industry Standards Met	UL 486A-486B
Standards - RoHS Compliance Status	EX
Certification - UL Listed Direct Burial	No
UL Listed	Yes
Certification - CSA Approved	Yes

Conductor

Conductor - AL Str Size	<ul style="list-style-type: none"> • 6 AWG • 4 AWG • 3 AWG • 2 AWG • 1 AWG • 1/0 AWG • 2/0 AWG • 3/0 AWG • 4/0 AWG • 250 kcmil • 266 kcmil • 300 kcmil
Conductor - AL Str Size Range	6 Str.- 300 Kcmil
Conductor - Copper Str Size	<ul style="list-style-type: none"> • 6 AWG • 5 AWG • 4 AWG • 3 AWG • 2 AWG • 1 AWG • 1/0 • 2/0 AWG

- 3/0 AWG
- 4/0 AWG
- 250 kcmil
- 300 kcmil

Conductor Size 6 AWG-300 KCMIL

- Conductor - Copper Solid Size
- 4 AWG
 - 3 AWG
 - 2 AWG
 - 1 AWG
 - 1/0 AWG
 - 2/0 AWG
 - 3/0 AWG
 - 4/0 AWG

Number Of Conductors 2

Conductor - Copper Solid Size Range 4 AWG-4/0 AWG

- Conductor Type
- AL C Str-Size
 - CU C Str-Size
 - CU C Solid-Size

Conductor - Copper Str Size Range 6 Str.- 300 Kcmil

Configuration

Physical Attribute - Number of Holes 1

Connector Type Stacked

Dimensions

Dimension - Pad Width inch	1.02 in
Package Height	3.400 in
Dimension - Height mm	51.6 mm
Dimension - Height inch	2.03 in
Dimension - Height fraction	2 in
Package Weight	0.910 lb.
Package Length	4.300 in
Package Width	3.750 in
Dimension - L Length Overall mm	76 mm
Dimension - Thread Size	5/16 in
Dimension - Hole Size mm	8 mm
Dimension - Hole Size inch	0.33 in
Dimension - Screw Size inch	11/16
Dimension - Stud Size inch	5/16 in
Dimension - Stud Size fraction	5/16
Dimension - Bolt Hole Size inch	0.31 in
Dimension - Bolt Size fraction	5/16

Dimension - Width mm 25 mm
Dimension - Width inch 1.02 in
Dimension - D inch 0.94 in
Dimension - N inch 0.47 in
Dimension - Length Overall inch 3.00 in

Force Related

Installation Torque 275 LBS/in
Recommended in-lb

General

Material - Hardware Aluminum
Physical Attribute - Screw Type Allen
Plated Y
Sub Brand UNIVERSAL TERM
UPC 781810370261

Type Bolted Lugs & Terminals
Hex Key 3/4
Material Aluminum
Plating Type Tin plated
UPC 12 Digit 781810370261
UPC 14 Digit GTIN 00781810370261

Logistics

Minimum Pack Quantity 1
Pallet Quantity 2304
Carton Quantity 72

Operational

Temperature Rating 194

Product Assets

[Catalog \[English\]](#)



A Hubbell brand