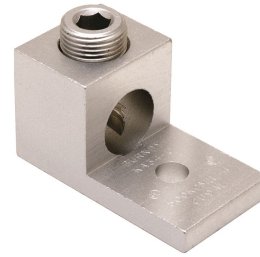




KA40U, AL Universal Terminal, 1-Hole, Dual Rated

By Burndy
 Catalog # [KA40U](#)

Aluminum Universal Terminal, 1 Hole, 300-800 kcmil, 1/2" Stud, 1 Screw, Al/Cu Rated, Tin Plated



Features

- Dual Rated Panelboard Lugs
- High strength extruded aluminum alloy
- Electro tin-plated for low contact resistance
- Rated to 35kV

Application

For Aluminum And Copper Conductors

Specifications

Buy American Compliant	Yes
EU RoHS Indicator	Yes
Buy America(n) Qualified	<ul style="list-style-type: none"> • Buy America Compliant (All status valid till December 2026) • Buy American Act Compliant (All status valid till December 2026) • BABA Compliant (All status valid till December 2026)
Industry Standard(s)	UL 486A-486B
Standards - Industry Standards Met	UL 486A-486B
Standards - RoHS Compliance Status	EX
Certification - UL Listed Direct Burial	No
UL Listed	Yes
Certification - CSA Approved	Yes

Conductor

Conductor - AL Str Size	<ul style="list-style-type: none"> • 300 kcmil • 336 kcmil • 350 kcmil • 397 kcmil • 400 kcmil • 450 kcmil • 477 kcmil • 500 kcmil • 550 kcmil • 556 kcmil • 600 kcmil • 636 kcmil • 650 kcmil • 700 kcmil
-------------------------	--

- 715 kcmil
- 750 kcmil
- 795 kcmil
- 800 kcmil

Conductor - AL Str Size Range 300 kcmil-800 kcmil
 Conductor - Copper Str Size

- 300 kcmil
- 350 kcmil
- 400 kcmil
- 450 kcmil
- 500 kcmil
- 550 kcmil
- 600 kcmil
- 700 kcmil
- 750 kcmil
- 800 kcmil

Conductor Size 300-800 KCMIL

Number Of Conductors 1

Conductor Type

- CU C Str-Size
- AL C Str-Size

Conductor - Copper Str Size Range 300 kcmil-800 kcmil

Configuration

Physical Attribute - Number of Screws 1

Physical Attribute - Number of Holes 1

Connector Type Terminal

Dimensions

Dimension - Pad Width inch	1.77 in
Package Height	2.250 in
Dimension - Height mm	49.5 mm
Dimension - Height inch	1.95 in
Package Weight	1.750 lb.
Package Length	8.100 in
Package Width	3.400 in
Dimension - L Length Overall mm	89 mm
Dimension - Width fraction	1-3/4 in
Dimension - Hole Size mm	17 mm
Dimension - Hole Size inch	0.66 in
Dimension - Stud Size inch	1/2
Dimension - Bolt Hole Size inch	0.62 in
Dimension - Bolt Size fraction	1/2
Dimension - Width mm	44 mm

Dimension - Width inch 1.75 in
Dimension - D inch 1.85 in
Dimension - N inch 0.81 in
Dimension - Length Overall inch 3.50 in

Force Related

Installation Torque Recommended in-lb 550 LBS/in

General

Material - Hardware Aluminum
Physical Attribute - Screw Type Allen
Plated Y

Sub Brand UNIVERSAL TERM
UPC 781810370308
Type Bolted Lugs & Terminals
Material Aluminum
Plating Type Tin
UPC 14 Digit GTIN 00781810370308

Logistics

Minimum Pack Quantity 1
Pallet Quantity 1920
Carton Quantity 60

Product Assets

[Catalog \[English\]](#)



A Hubbell brand