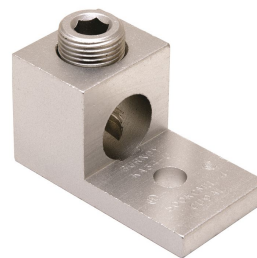


KA36U, AL Universal, 1-Conductor, 1-Hole, Dual Rated

By Burndy
Catalog # [KA36U](#)

Aluminum Universal Terminal, 1 Hole, 2 AWG (Str)-600 kcmil, 3/8" Stud, 1 Screw, Al/Cu Rated, Tin Plated



Features

- Dual Rated Panelboard Lugs
- High strength extruded aluminum alloy
- Electro tin-plated for low contact resistance
- Rated to 35kV

Application

For Aluminum And Copper Conductors

Specifications

Buy American Compliant	Contact Manufacturer
EU RoHS Indicator	Yes
Buy America(n) Qualified	TAA Compliant (All status valid till December 2026)
Industry Standard(s)	UL 486A-486B
Standards - Industry Standards Met	UL 486A-486B
Standards - RoHS Compliance Status	EX
Certification - UL Listed Direct Burial	No
UL Listed	Yes
Certification - CSA Approved	Yes

Conductor

Conductor - AL Str Size	<ul style="list-style-type: none"> • 2 AWG • 1 AWG • 1/0 AWG • 2/0 AWG • 3/0 AWG • 4/0 AWG • 250 kcmil • 266 kcmil • 300 kcmil • 336 kcmil • 350 kcmil • 397 kcmil • 400 kcmil • 450 kcmil • 477 kcmil • 500 kcmil • 550 kcmil • 556 kcmil • 600 kcmil
Conductor - AL Str Size Range	2 AWG-600 kcmil

Conductor - Copper Str Size	<ul style="list-style-type: none"> • 2 AWG • 1 AWG • 1/0 • 2/0 AWG • 3/0 AWG • 4/0 AWG • 250 kcmil • 300 kcmil • 350 kcmil • 400 kcmil • 450 kcmil • 500 kcmil • 550 kcmil • 600 kcmil
Conductor Size	2 AWG-600 KCMIL
Number Of Conductors	1
Conductor Type	<ul style="list-style-type: none"> • AL C Str-Size • CU C Str-Size • CU C Solid-Size
Conductor - Copper Str Size Range	2 AWG-600 kcmil

Configuration

Physical Attribute - Number of Screws	1
Physical Attribute - Number of Holes	1
Connector Type	Terminal

Dimensions

Dimension - Pad Width inch	1.52 in
Package Height	2.300 in
Dimension - Height mm	40.1 mm
Dimension - Height inch	1.58 in
Package Weight	4.350 lb.
Package Length	10.200 in
Package Width	3.550 in
Dimension - L Length Overall mm	81 mm
Dimension - Width fraction	1-1/2 in
Dimension - Hole Size mm	11 mm
Dimension - Hole Size inch	0.42 in
Dimension - Stud Size inch	3/8
Dimension - Bolt Hole Size inch	0.38 in
Dimension - Bolt Size fraction	3/8
Dimension - Width mm	38 mm

Dimension - Width inch 1.50 in
Dimension - D inch 1.72 in
Dimension - N inch 0.78 in
Dimension - Length Overall inch 3.19 in

Force Related

Installation Torque 550
Recommended in-lb

General

Material - Hardware Aluminum
Physical Attribute - Screw Type Allen
Plated Y

Sub Brand UNIVERSAL TERM
UPC 781810370254
Type Bolted Lugs & Terminals
Material Aluminum
Plating Type Tin
UPC 14 Digit GTIN 00781810370254

Logistics

Minimum Pack Quantity 1
Pallet Quantity 3024
Carton Quantity 120

Product Assets

[Catalog \[English\]](#)



A Hubbell brand