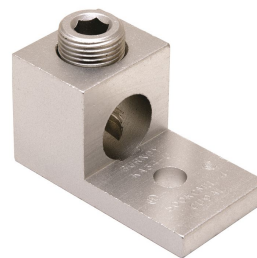


## KA31U, AL Set Screw Connector, 1-Conductor, 1-Hole

By Burndy  
Catalog # [KA31U](#)

Aluminum Universal Terminal, 1 Hole, 6 AWG (Str)-350 kcmil, 3/8" Stud, 1 Screw, Al/Cu Rated, Tin Plated



### Features

- Dual Rated Panelboard Lugs
- High strength extruded aluminum alloy
- Electro tin-plated for low contact resistance
- Rated to 35kV

### Application

For Aluminum And Copper Conductors

### Specifications

EU RoHS Indicator	Yes
Industry Standard(s)	UL 486A-486B
Standards - Industry Standards Met	UL 486A-486B
Standards - RoHS Compliance Status	EX
Certification - UL Listed Direct Burial	No
UL Listed	Yes
Certification - CSA Approved	Yes

### Conductor

Conductor - AL Str Size	<ul style="list-style-type: none"> <li>• 6 AWG</li> <li>• 4 AWG</li> <li>• 3 AWG</li> <li>• 2 AWG</li> <li>• 1 AWG</li> <li>• 1/0 AWG</li> <li>• 2/0 AWG</li> <li>• 3/0 AWG</li> <li>• 4/0 AWG</li> <li>• 250 kcmil</li> <li>• 266 kcmil</li> <li>• 300 kcmil</li> <li>• 336 kcmil</li> <li>• 350 kcmil</li> </ul>
Conductor - AL Str Size Range	6 AWG-350 kcmil
Conductor - Copper Str Size	<ul style="list-style-type: none"> <li>• 6 AWG</li> <li>• 5 AWG</li> <li>• 4 AWG</li> <li>• 3 AWG</li> <li>• 2 AWG</li> <li>• 1 AWG</li> <li>• 1/0</li> <li>• 2/0 AWG</li> </ul>

- 3/0 AWG
- 4/0 AWG
- 250 kcmil
- 300 kcmil
- 350 kcmil

Conductor Size	6 AWG-350 KCMIL
Number Of Conductors	1
Conductor Type	<ul style="list-style-type: none"> <li>• CU C Str-Size</li> <li>• AL C Str-Size</li> </ul>
Conductor - Copper Str Size Range	6 AWG-350 kcmil

### Configuration

Physical Attribute - Number of Screws	1
Physical Attribute - Number of Holes	1
Connector Type	Terminal

### Dimensions

Dimension - Pad Width inch	1.14 in
Package Height	2.250 in
Dimension - Height mm	32.3 mm
Dimension - Height inch	1.27 in
Dimension - Height fraction	1.2702702702702702 in
Package Weight	3.700 lb.
Package Length	10.100 in
Package Width	5.550 in
Dimension - L Length Overall mm	57 mm
Dimension - Width fraction	1-13/100 in
Dimension - Hole Size mm	11 mm
Dimension - Hole Size inch	0.42 in
Dimension - Stud Size inch	3/8
Dimension - Bolt Hole Size inch	0.38 in
Dimension - Bolt Size fraction	3/8
Dimension - Width mm	29 mm
Dimension - Width inch	1.13 in
Dimension - D inch	1.03 in
Dimension - N inch	0.52 in
Dimension - Length Overall inch	2.25 in

### Force Related

Installation Torque Recommended in-lb	275 LBS/in
---------------------------------------	------------

## General

Material - Hardware	Aluminum
Physical Attribute - Screw Type	Allen
Plated	Y
Sub Brand	UNIVERSAL TERM
UPC	781810370209
Type	Bolted Lugs & Terminals
Material	Aluminum
Plating Type	Tin
UPC 14 Digit GTIN	00781810370209

## Logistics

Pallet Quantity	6400
Carton Quantity	200

## Operational

Temperature Rating	194
--------------------	-----

## Product Assets

[Catalog \[English\]](#)

---

