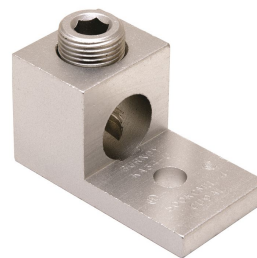


KA29U, AL Set Screw Terminal, Dual Rated, 1-Hole

By Burndy
Catalog # [KA29U](#)

Aluminum Universal Terminal, 1 Hole, 6 AWG (Str)-250 kcmil, 5/16" Stud, 1 Screw, Al/Cu Rated, Tin Plated



Features

- Dual Rated Panelboard Lugs
- High strength extruded aluminum alloy
- Electro tin-plated for low contact resistance
- Rated to 35kV

Application

For Aluminum And Copper Conductors

Specifications

EU RoHS Indicator	Yes
Industry Standard(s)	UL 486A-486B
Standards - Industry Standards Met	UL 486A-486B
Standards - RoHS Compliance Status	EX
Certification - UL Listed Direct Burial	No
UL Listed	Yes
Certification - CSA Approved	Yes

Conductor

Conductor - Nominal Diameter	0.184, 0.184, 0.206, 0.232, 0.232, 0.260, 0.260, 0.292, 0.320, 0.328, 0.360, 0.368, 0.390, 0.414, 0.438, 0.464, 0.492, 0.522, 0.528, 0.574, 0.600
------------------------------	---

Conductor - AL Str Size	<ul style="list-style-type: none"> • 6 • 4 • 3 • 2 • 1 • 1/0 • 2/0 • 3/0 • 4/0 • 250
-------------------------	--

Conductor - AL Str Size Range	6-250
-------------------------------	-------

Conductor - Copper Str Size	<ul style="list-style-type: none"> • 6 • 5 • 4 • 3 • 2 • 1
-----------------------------	--

Conductor Size	• 1/0
	• 2/0
	• 3/0
	• 4/0
	• 250
Conductor Size	6 AWG-250 KCMIL
Number Of Conductors	1
Conductor Type	<ul style="list-style-type: none"> • AL C Str-Size • CU C Str-Size • CU C Solid-Size
Conductor - Copper Str Size Range	6-250

Configuration

Physical Attribute - Number of Screws	1
Physical Attribute - Number of Holes	1
Connector Type	Terminal

Dimensions

Dimension - Pad Width inch	1.02 in
Package Height	2.300 in
Dimension - Height mm	29 mm
Dimension - Height inch	1.14 in
Dimension - Height fraction	1.14 in
Package Weight	2.780 lb.
Package Length	10.100 in
Package Width	3.550 in
Dimension - L Length Overall mm	51 mm
Dimension - Hole Size mm	8 mm
Dimension - Hole Size inch	0.33 in
Dimension - Stud Size inch	5/16
Dimension - Bolt Hole Size inch	0.31 in
Dimension - Bolt Size fraction	5/16
Dimension - Width mm	25 mm
Dimension - Width inch	1.00 in
Dimension - D inch	0.94 in
Dimension - N inch	0.47 in
Dimension - Length Overall inch	2.00 in

Force Related

Installation Torque Recommended in-lb	275 LBS/in
---------------------------------------	------------

General

Material - Hardware	Aluminum
Physical Attribute - Screw Type	Allen
Plated	Y
Sub Brand	UNIVERSAL TERM
UPC	781810370155
Type	Bolted Lugs & Terminals
Material	Aluminum
Plating Type	Tin
UPC 14 Digit GTIN	00781810370155

Logistics

Pallet Quantity	8000
Carton Quantity	250

Operational

Temperature Rating	194
--------------------	-----

Product Assets

[Catalog \[English\]](#)

