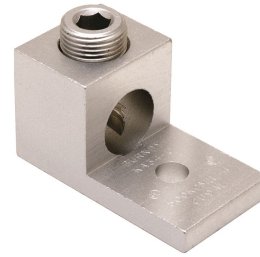


KA26U, AL Set Screw Terminal, Dual Rated, 1-Hole

By Burndy
Catalog # [KA26U](#)

Aluminum Universal Terminal, 1-Hole, 1/4" Stud, #6-2/0 AWG, Tin Plated



Features

- Dual Rated Panelboard Lugs
- High strength extruded aluminum alloy
- Electro tin-plated for low contact resistance
- Rated to 35kV

Application

For Aluminum And Copper Conductors

Specifications

Buy American Compliant	Contact Manufacturer
EU RoHS Indicator	Yes
Buy America(n) Qualified	TAA Compliant (All status valid till December 2026)
Industry Standard(s)	UL 486A-486B
Standards - Industry Standards Met	UL 486A-486B
Standards - RoHS Compliance Status	EX
Certification - UL Listed Direct Burial	No
UL Listed	Yes
Certification - CSA Approved	Yes

Conductor

Conductor - Nominal Diameter	0.184, 0.184, 0.206, 0.232, 0.232, 0.260, 0.260, 0.292, 0.320, 0.328, 0.360, 0.368, 0.390, 0.414, 0.438
Conductor - AL Str Size	<ul style="list-style-type: none"> • 14 • 4 • 3 • 2 • 1 • 1/0 • 2/0
Conductor - AL Str Size Range	14-2/0
Conductor - Copper Str Size	<ul style="list-style-type: none"> • 14 • 5 • 4 • 3 • 2 • 1 • 1/0 • 2/0

Conductor Size	6-2/0 AWG
Number Of Conductors	1
Conductor Type	<ul style="list-style-type: none"> • CU C Str-Size • AL C Str-Size
Conductor - Copper Str Size Range	14-2/0

Configuration

Physical Attribute - Number of Screws	1
Physical Attribute - Number of Holes	1
Connector Type	Terminal

Dimensions

Dimension - Pad Width inch	0.64 in
Package Height	3.450 in
Dimension - Height mm	20.3 mm
Dimension - Height inch	0.80 in
Dimension - Height fraction	4/5 in
Package Weight	1.690 lb.
Package Length	5.500 in
Package Width	4.750 in
Dimension - L Length Overall mm	37 mm
Dimension - Width fraction	63/100 in
Dimension - Hole Size mm	7 mm
Dimension - Hole Size inch	0.27 in
Dimension - Stud Size inch	1/4
Dimension - Bolt Hole Size inch	0.25 in
Dimension - Bolt Size fraction	1/4
Dimension - Width mm	16 mm
Dimension - Width inch	0.63 in
Dimension - D inch	0.81 in
Dimension - N inch	0.45 in
Dimension - Length Overall inch	1.47 in

Force Related

Installation Torque Recommended in-lb	120 LBS/in
---------------------------------------	------------

General

Material - Hardware	Aluminum
Physical Attribute - Screw Type	Allen

Plated Y
Sub Brand UNIVERSAL TERM
UPC 781810370100
Type Bolted Lugs & Terminals
Material Aluminum
Plating Type Tin
UPC 14 Digit GTIN 00781810370100

Minimum Pack Quantity 50
Pallet Quantity 28800
Carton Quantity 900

Operational

Temperature Rating 194

Logistics

Product Assets

[Catalog \[English\]](#)



A Hubbell brand